

REMOVING/UNINSTALLING THE BSDI DATABASE SOFTWARE

This document will outline the steps necessary to remove/uninstall the BSDI Database Software.

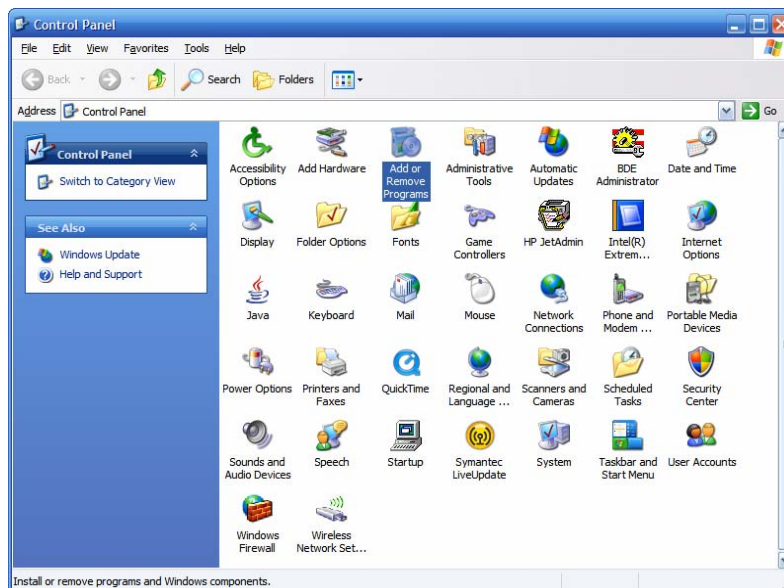
Please note that removing the BSDI Database Software will remove your Database, and therefore you will lose all of your clients' data. (If you intend to reinstall the software you MUST take a backup of your database prior to the software removal process. Please see the BSDI Backup Guides available on our website: <http://bsdi.cc/support.htm>).

The uninstall process comprises of number of steps which involves the removal of two pieces of software, and the deletion of two folders/directories.

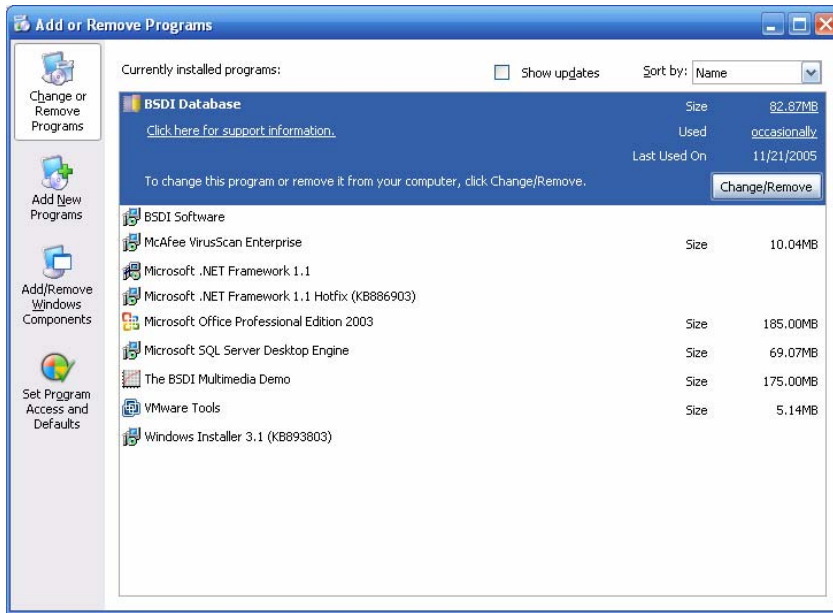
- The software that you will remove:
 - **BSDI Database.**
 - **Microsoft SQL Server Desktop Engine.**
- The two folders/directories that you will remove:
 - **C:\Program Files\BSDI**
 - **C:\Program Files\Microsoft SQL Server**

Procedure

1. Click the Windows “Start” button, and click on the “Control Panel” link that appears in the displayed dialog window. (If you are running Windows 2000, you will have to click on “Settings” menu option first, and then you will click on the “Control Panel” option).

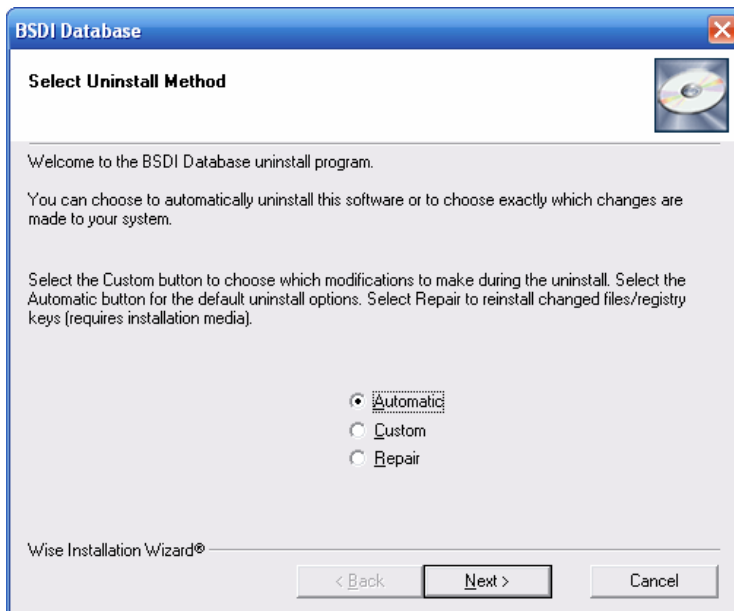


2. Click on the “Add/Remove Programs” icon.
3. In the “Add/Remove Programs” dialog window, navigate down the window until you locate “BSDI Database”. Click on “BSDI Database” to select it.

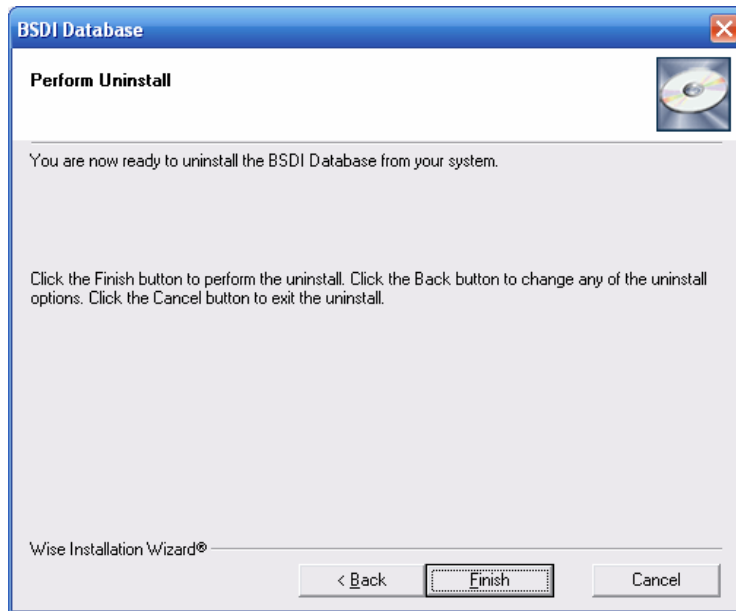


4. Click on the “Remove” button.
5. The version of the BSDI Database installed will determined the removal steps. If you have a database version installed prior to version 10.11.0, please skip to item 13.

BSDI Database Removal/Uninstall version 10.11.0 & above:

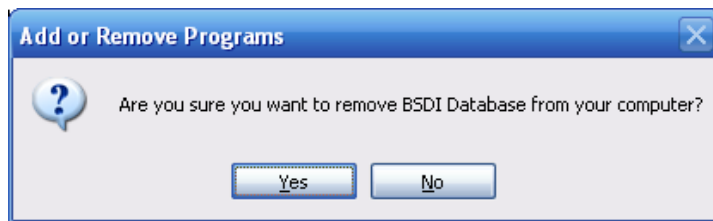


6. Select “Automatic” click “Next”.



7. Click "Finish" to begin the uninstall process.
8. When the uninstall process is complete the window will close. Please skip to the end of item 14.

BSDI Database Removal/Uninstall versions prior to version 10.11.0:

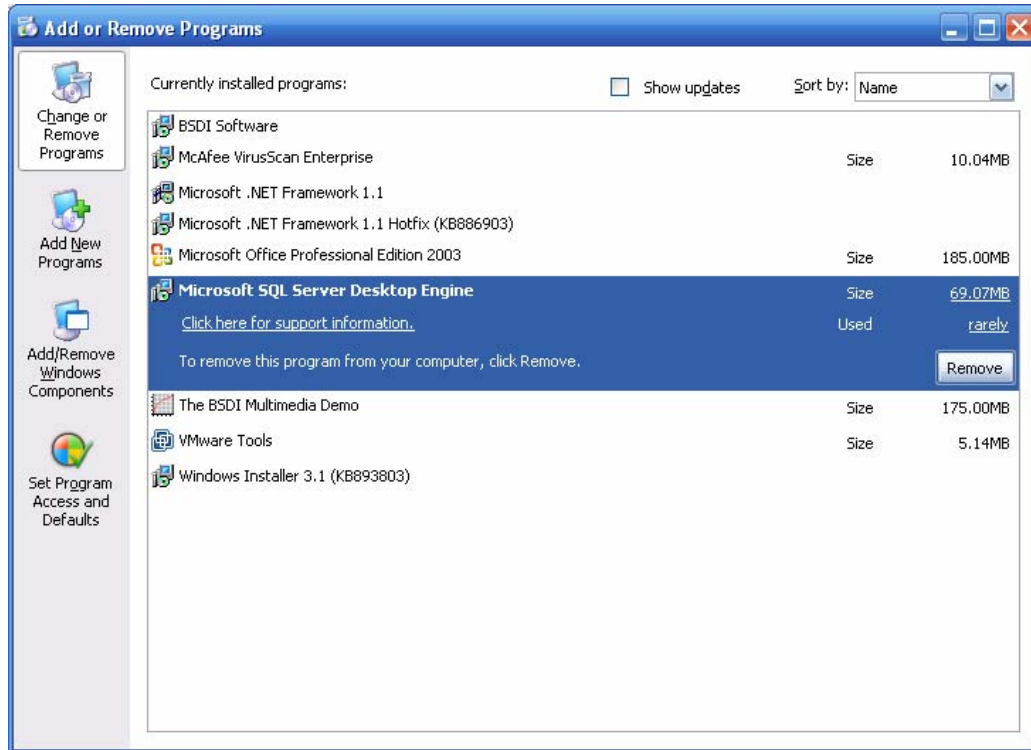


9. Click "Yes" to proceed.
10. When the remove/uninstall is complete the window will close.

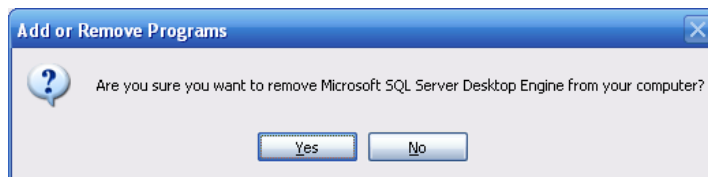
Microsoft SQL Server Desktop Engine Removal/Uninstall:

Note: Only remove the Microsoft SQL Server Desktop Engine if no other programs on your PC use the application/software.

11. In the “Add/Remove Programs” dialog window, navigate down the window until you locate “Microsoft SQL Server Desktop Engine”. Click on “Microsoft SQL Server Desktop Engine” to select it.



12. Click on the “Remove” button.

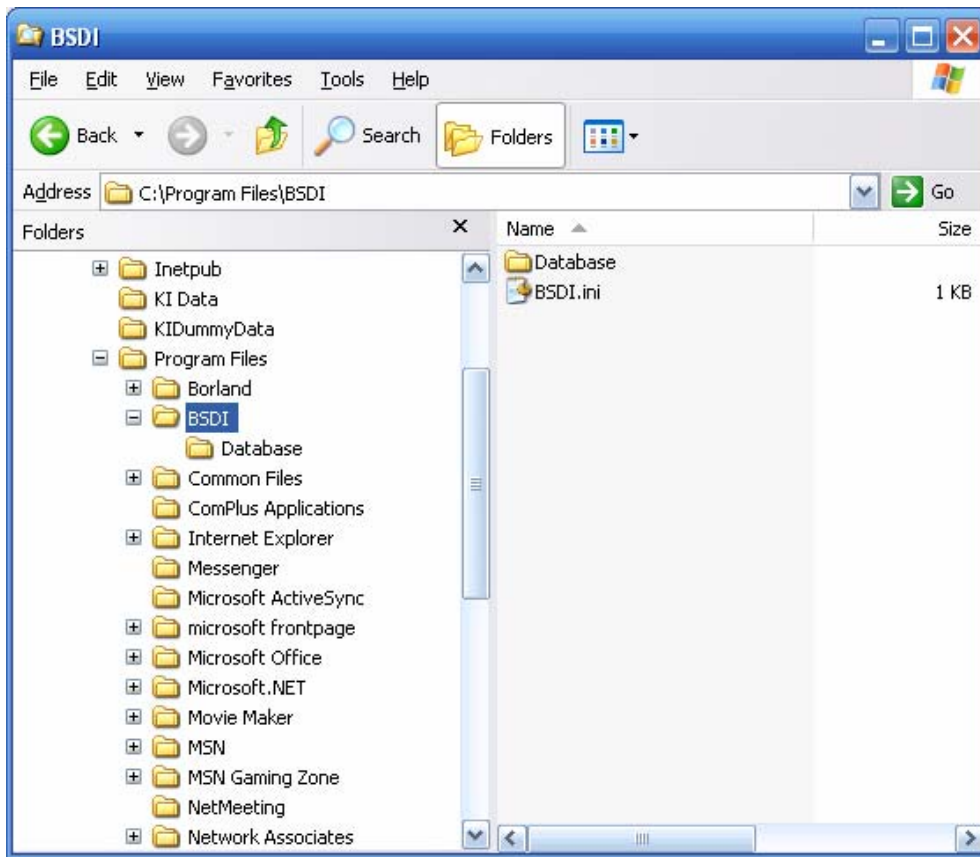


13. Click “Yes” to proceed.
14. When the remove/uninstall is complete the window will close.
15. Close the “Add/Remove Programs” window.

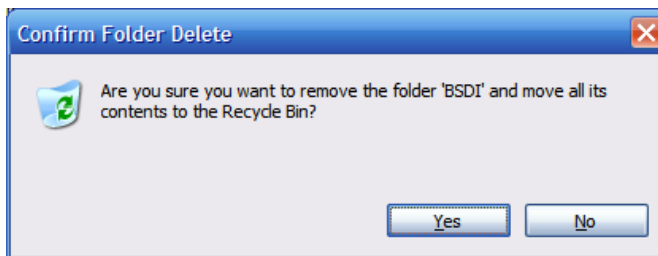
Removing/Deleting file directories:

16. Right click on the “My Computer” icon on your desktop, or by clicking on the “Start” button.

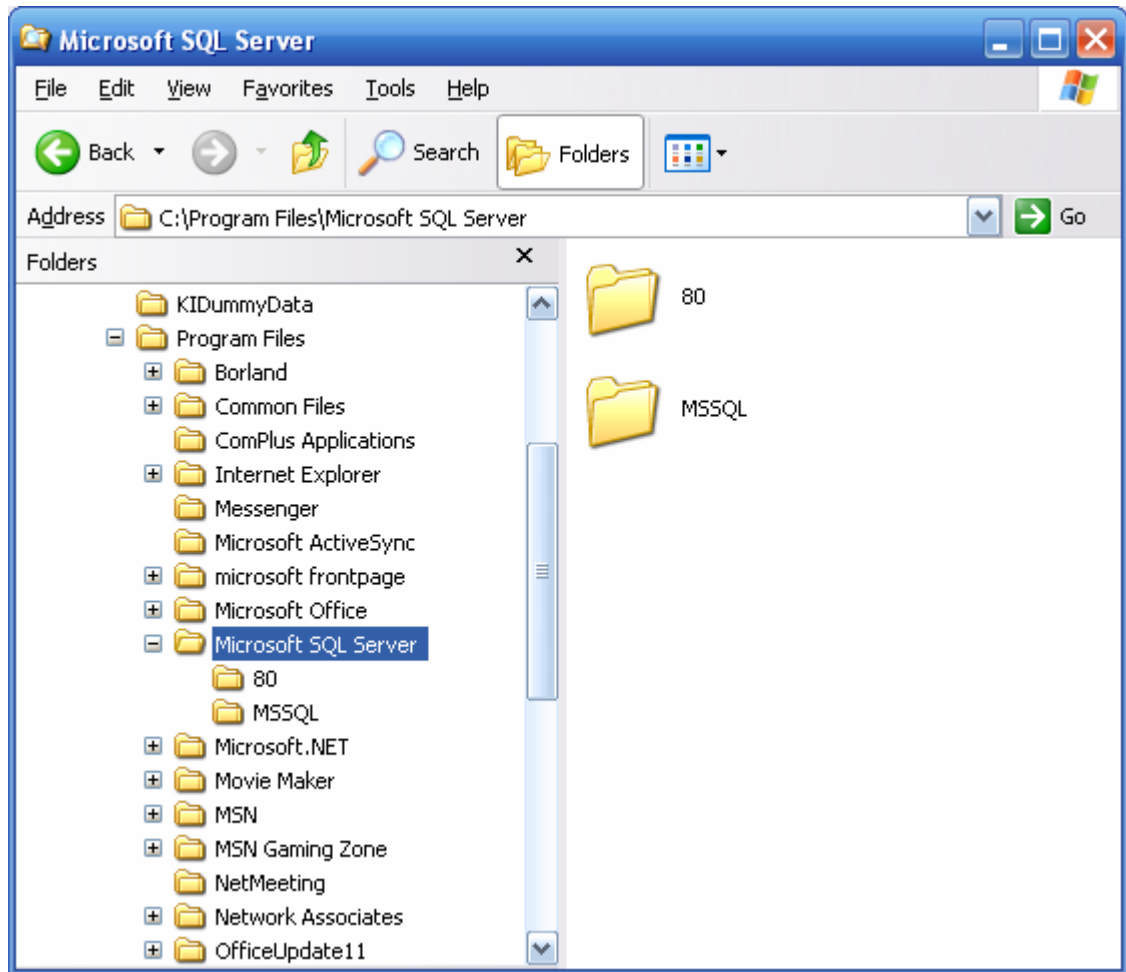
17. Select "Explore" from the dropdown menu.
18. Navigate to "C:\Program Files\BSDI"



19. Click on "C:\Program Files\BSDI", so it is highlighted.
20. Press the "Delete Key" to delete the folder/directory.

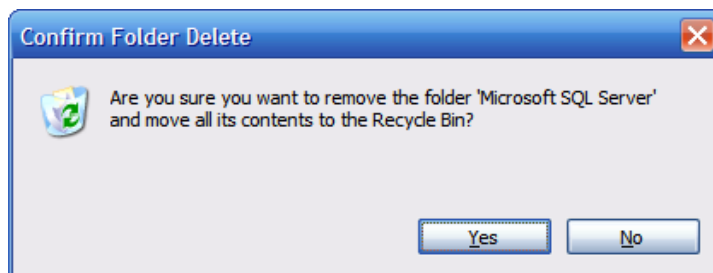


21. Click "Yes" to confirm the deletion.
22. Navigate to "C:\Program Files\Microsoft SQL Server" (This folder/directory may already have been uninstalled by the removal of the Microsoft SQL Server Desktop Engine). **Please Note: Only remove the "C:\Program Files\Microsoft SQL Server" folder if no other programs on your PC use the Microsoft SQL Server Desktop Engine application/software.**



23. Click on "C:\Program Files\Microsoft SQL Server", so it is highlighted.

24. Press the "Delete Key" to delete the folder/directory.



25. Click "Yes" to confirm the deletion.

26. Close the "Windows Explorer" window.

27. You have now successfully completed the removal/uninstall of the BSDI Windows Software.